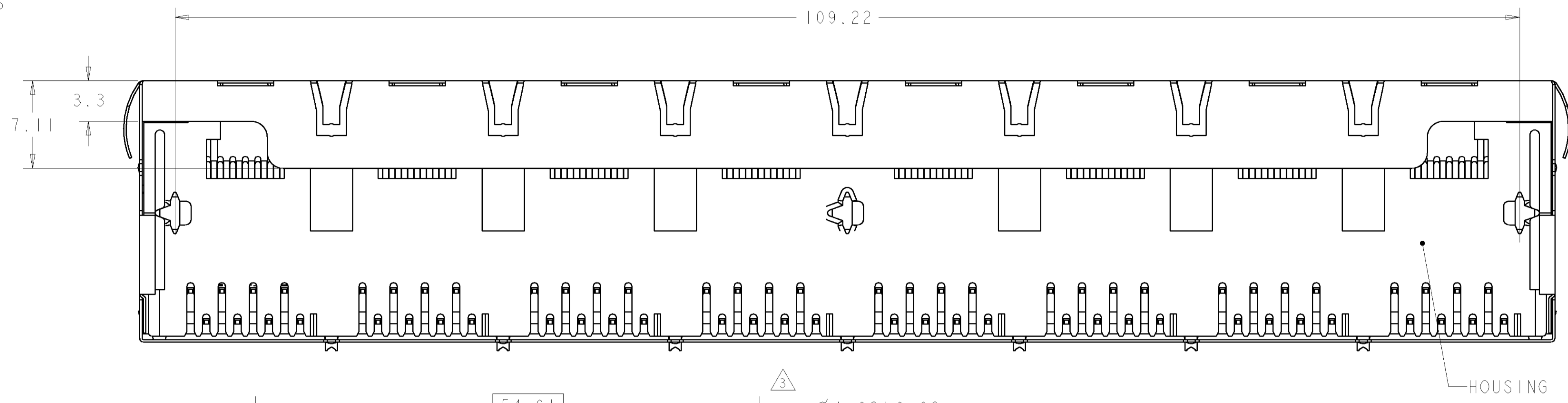
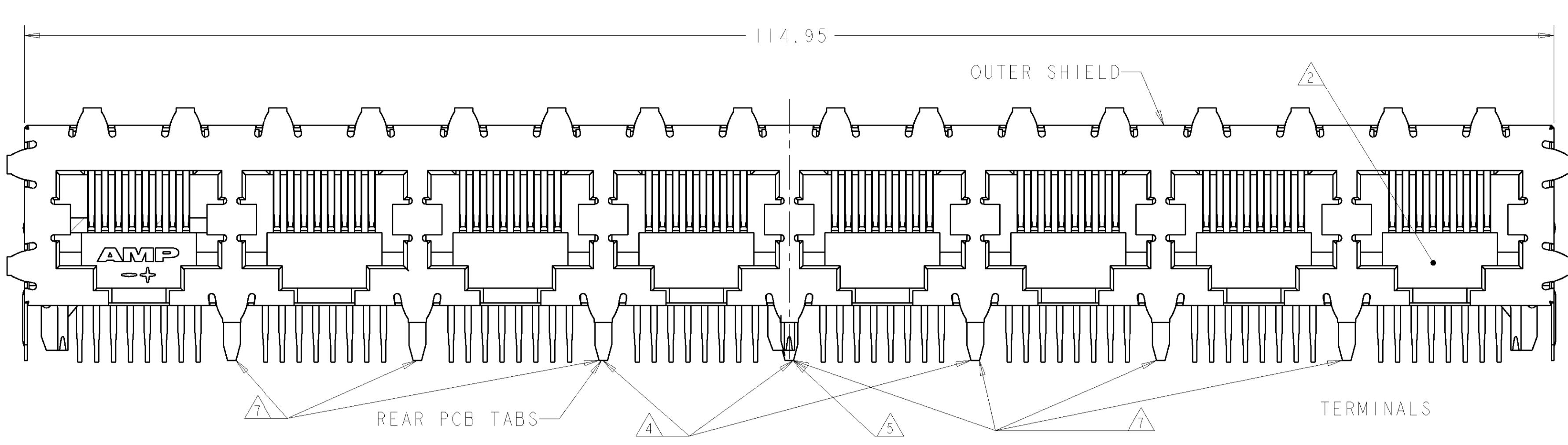
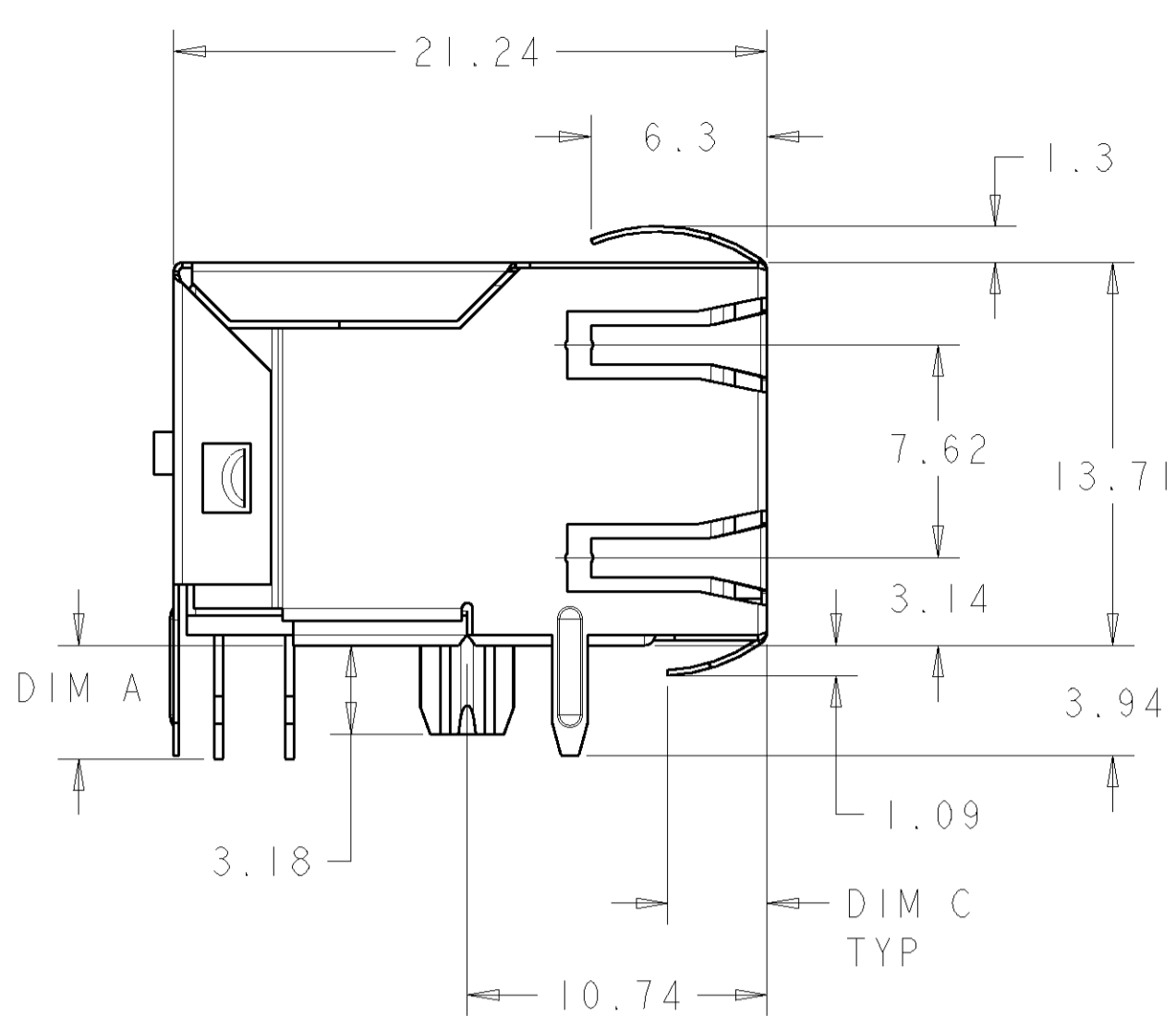
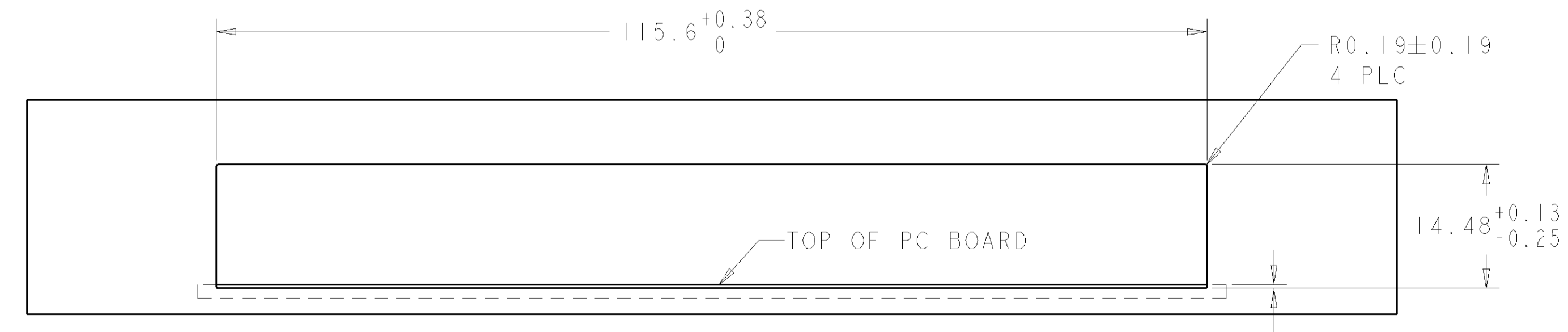
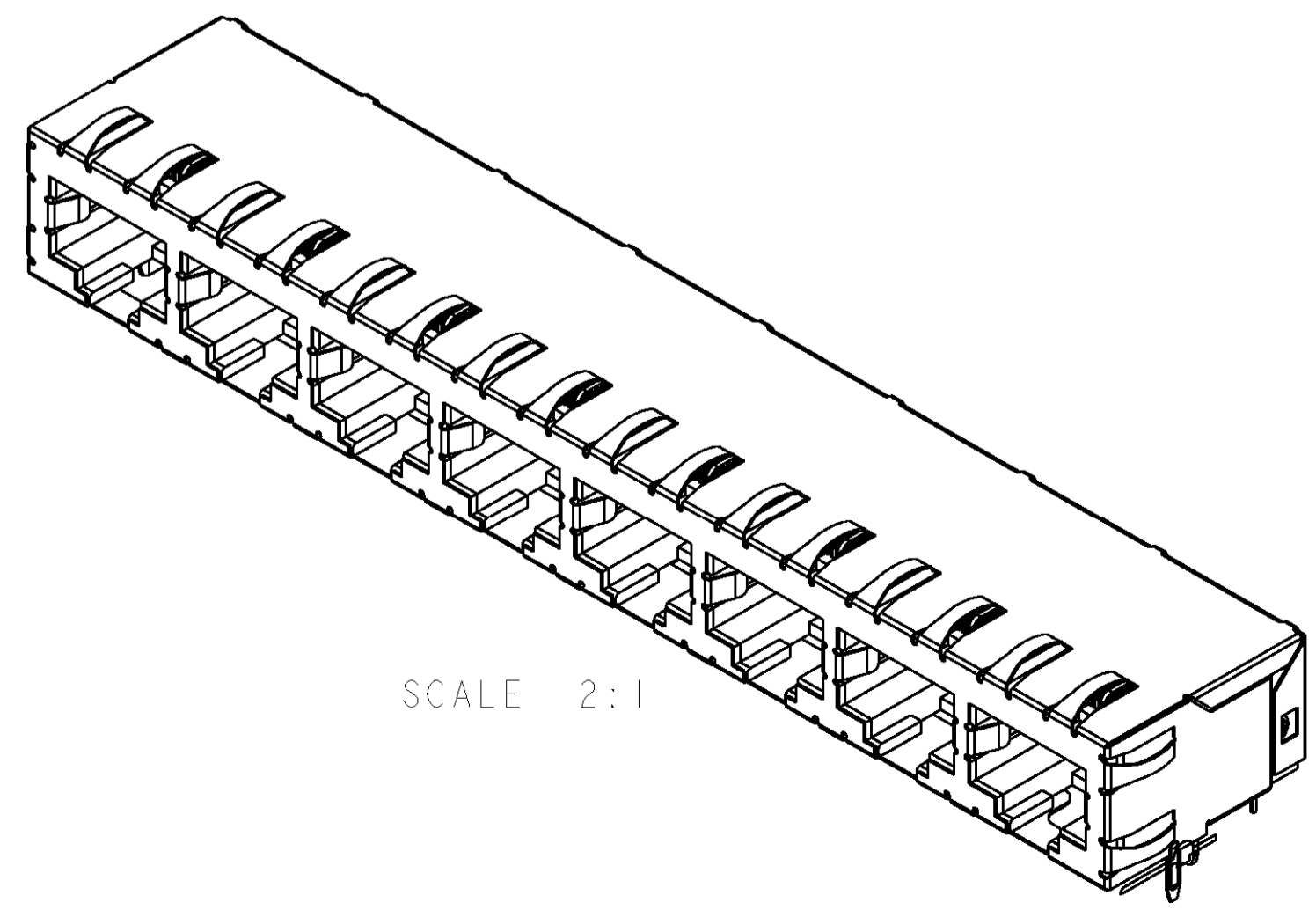
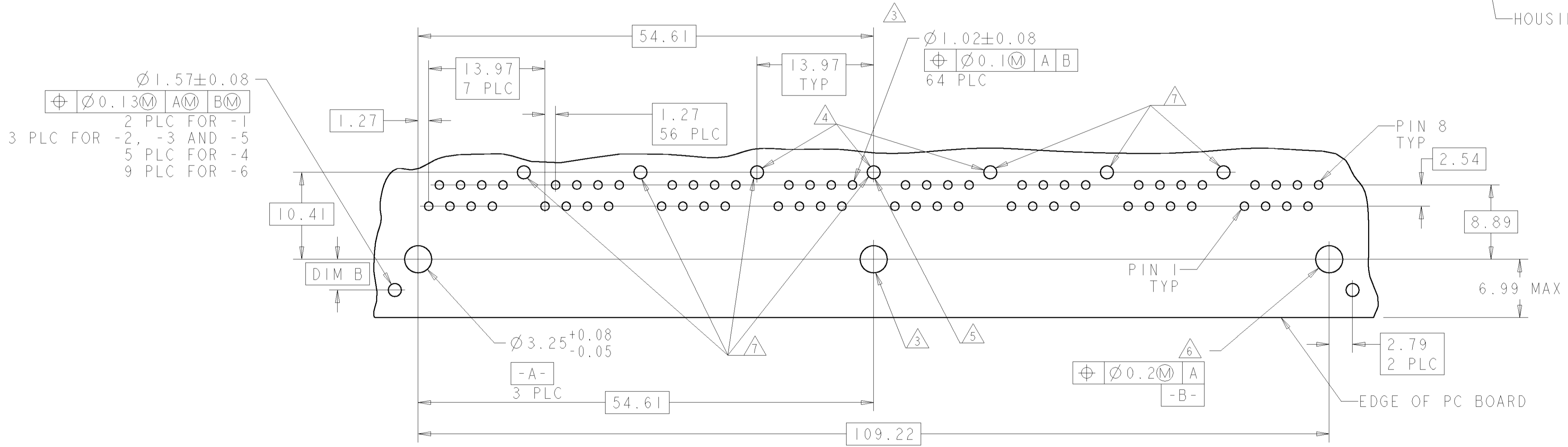


LOC	DIST	REV	DESCRIPTION	DATE	BY	APPD
AA	22	A	REV PER EC-0511-0201-04	23JUN2005	LV	SF
		B	REV PER ECO-07-004583	02MAR2007	RG	JW



- △ HOUSING: PCT POLYESTER, BLACK, UL 94V-0. IR REFLOW PROCESS COMPATIBLE.
- TERMINALS: 0.305 THICK PHOS BRONZE PLATED WITH 1.27µm MINIMUM THICK HARD GOLD IN LOCALIZED AREA AND 2.03µm MINIMUM THICK MATTE TIN IN SOLDER AREA OVER 1.27µm MINIMUM THICK NICKEL UNDERPLATE.
- SHIELD: 0.196 THICK COPPER ALLOY PLATED WITH 1.27µm MINIMUM NICKEL AND 2.03µm MINIMUM HOT TIN DIP ON PCB GROUND TABS.
- △ 2 JACK CAVITY CONFORMS TO FCC RULES AND REGULATIONS, PART 68 SUBPART F
- △ 3 CENTER BOARD LOCATOR AND PCB HOLE REQUIRED FOR ALL, EXCEPT -1
- △ 4 PCB HOLES/TABS USED FOR -4
- △ 5 PCB HOLES/TABS USED FOR -2, -3, AND -5
- △ 6 USE #30 DRILL BIT OR 3.25mm DRILL BIT WHEN PRODUCING THESE PCB HOLES
- △ 7 PCB HOLES/TABS USED FOR -6
- 8. RECOMMENDED APPLICATIONS: FAST ETHERNET, 10 BASE-T ETHERNET, AND 10/100 BASE-T ETHERNET (CAT 5 TWO PAIR 1/2, 3/6)



DIM C	DIM B	NUMBER OF REAR PCB TABS	NUMBER OF BOARD LOCATORS	DIM A	PART NO.
3.56	3.68	7	3	3.56	6339169-6
3.15	4.57	1	3	3.56	6339169-5
3.56	3.68	3	3	3.56	6339169-4
3.56	4.57	1	3	3.56	6339169-3
3.56	3.68	1	3	3.56	6339169-2
3.56	4.57	0	2	3.05	6339169-1

DIMENSIONS: mm		TOLERANCES UNLESS OTHERWISE SPECIFIED:		DWN: L. VARELA, 23JUN2005		ECHK: J. WESTMAN, 23JUN2005		APVD: S. FLICKINGER, 23JUN2005		NAME: ASSEMBLY, MULTI-PORT, 1X8, 8 POSITION, SHIELDED, WAVE PANEL GROUND	
0 PLC	±.25	0.13	±.05	TYCO Electronics		Tyco Electronics		Harrisburg, PA 17105-3608		RESTRICTED TO	
1 PLC	±.25	0.2	±.05	108-1163-9		SIZE: 4:1		SCALE: 4:1		SHEET 1 OF 1	
2 PLC	±.25	0.25	±.05	114-2048		WEIGHT: -		CUSTOMER DRAWING		REV B	
3 PLC	±.25	0.25	±.05	114-2048		FINISH: -		SCALE: 4:1		REV B	
4 PLC	±.25	0.25	±.05	114-2048		FINISH: -		SCALE: 4:1		REV B	
5 PLC	±.25	0.25	±.05	114-2048		FINISH: -		SCALE: 4:1		REV B	
6 PLC	±.25	0.25	±.05	114-2048		FINISH: -		SCALE: 4:1		REV B	
7 PLC	±.25	0.25	±.05	114-2048		FINISH: -		SCALE: 4:1		REV B	
8 PLC	±.25	0.25	±.05	114-2048		FINISH: -		SCALE: 4:1		REV B	
9 PLC	±.25	0.25	±.05	114-2048		FINISH: -		SCALE: 4:1		REV B	